



# WHO WE ARE AND WHAT WE DO

July 2009



This guide has been produced to explain the role of the South East England Partnership Board and its officers. The Partnership Board took over regional planning responsibilities on 1 April 2009 after the South East England Regional Assembly was dissolved.

We've given you three explanations:

- One for those people who **know very little** of regional government
- One for those who **have some understanding** of regional government
- One for those with a **detailed knowledge** of regional government.

# 1

## IF YOU KNOW VERY LITTLE ABOUT REGIONAL GOVERNMENT

The staff of the South East England Partnership Board is made up of the former Assembly secretariat and some South East England Development Agency (SEEDA) staff.

They provide support to the Partnership Board in order to deliver a new Regional Strategy that combines planning for the economy with decisions on how we use land for development and how we protect the environment.

The Partnership Board is the Regional Planning Body, which means it is responsible for bringing together the Regional Economic Strategy and South East Plan into a single Regional Strategy.

The Partnership Board comprises four members of the board of SEEDA and eight members of South East England Leaders' Board (councillors from the region's local authorities).

# IF YOU HAVE SOME UNDERSTANDING OF REGIONAL GOVERNMENT

## **SOUTH EAST ENGLAND PARTNERSHIP BOARD**

The Partnership Board is responsible for commissioning, signing off and delivering the Regional Strategy, which will combine and build on the South East Plan and Regional Economic Strategy.

The Partnership Board is the Regional Planning Body until the Local Democracy, Economic Development and Construction Bill is passed (likely to be autumn 2009). At that point the Bill proposes that there is no need for a regional planning body as both SEEDA's board and the Leaders' Board would be individually accountable to ministers.

## **THE SOUTH EAST ENGLAND STRATEGY BOARD**

The Strategy Board will develop the elements of the regional strategy on behalf of the Partnership Board, make sure the focus is on sustainable economic development and sign off the related business plan. It will oversee work to implement the South East Plan and the Regional Economic Strategy, which will be formally linked to make a single Regional Strategy when the Local Democracy, Economic Development and Construction Bill is passed.

## **OTHER BOARDS AND GROUPS**

Supporting the decision-making Partnership and Strategy Boards, there will be **delivery boards** (Regional Transport Board, Housing and Regeneration Board, Economic Development and Skills Board), together with a small number of **working groups** to provide specific technical advice.

**Stakeholders** - those with an interest in the impact of the Regional Strategy - will continue to play an important role, being represented both as observers on the Strategy Board and via the Stakeholder Liaison Group.

## **SOUTH EAST ENGLAND PARTNERSHIP BOARD STAFF**

The officers of the South East England Partnership Board (made up of former Assembly staff and some SEEDA employees) provide technical, administrative and communications support and advice to the Partnership Board, the Strategy Board, delivery boards and working groups.

The staff will develop, monitor and help implement the Regional Strategy under the direction of the Partnership Board. Communities and Local Government (CLG) funds the Regional Strategy work.

## SOUTH EAST ENGLAND PARTNERSHIP BOARD

### Members

The Partnership Board is made up of four SEEDA board members and eight councillors from South East England Leaders' Board (SEELB) – the executive committee of South East England Councils. They are tasked with reaching consensus on decisions concerning the Regional Strategy and passing their advice to the Secretary of State.

### What it does

The Partnership Board is responsible for commissioning and signing off the Regional Strategy, which will combine and build on the South East Plan and Regional Economic Strategy. This Board will:

- Commission and approve the Single Regional Strategy
- Approve the regional delivery plan
- Approve the annual monitoring report.

The Partnership Board is the Regional Planning Body until the Local Democracy, Economic Development and Construction Bill is passed (likely to be autumn 2009). At that point the Bill proposes that there is no need for a regional planning body as SEEDA's board and the Leaders' Board would be individually accountable.

## THE SOUTH EAST ENGLAND STRATEGY BOARD

### Members

Four SEEDA Board members and eight SEELB members.

### Observers

Working with members will be four delivery partners (for example statutory agencies such as the Homes and Community Agency, the Environment Agency, etc) and two 'stakeholder' representatives.

### What it does

The Strategy Board is accountable to the Partnership Board and is responsible for:

- Leading on development and implementation of the Regional Strategy
- Allocating Communities and Local Government (CLG) funding for the Regional Strategy and implementing the Partnership Board's business plan
- Making sure regional investment priorities reflect the Regional Strategy priorities
- Making sure the development of the Strategy and its delivery are closely linked
- Making sure sustainable economic growth is at the heart of the Regional Strategy
- Making sure there is effective engagement with environmental, social and economic stakeholders and the public
- Overseeing any continuing work required in relation to the South East Plan and the Regional Economic Strategy, which will together form the Regional Strategy when the Local Democracy, Economic Development and Construction Bill is passed.

contd. from previous page

## OTHER BOARDS/GROUPS

Supporting the decision-making Boards, there will be **delivery boards** (Regional Transport Board, Regional Housing Board, Economic Development and Skills Board), together with a small number of **working groups** (eg planning panel) to help give advice on specific aspects of the Regional Strategy and support the Strategy Board.

**Stakeholders** - those who have an interest in the impact of the Regional Strategy - have played an important part in the development of current regional strategies in the South East. They will continue to play an important role in the new regional strategy process as observers at 'member' and 'technical' levels. The number and nature of the **Technical Advisory Groups** is still to be decided.

## SOUTH EAST ENGLAND PARTNERSHIP BOARD STAFF

### Who we are

The officers of the South East England Partnership Board (made up of former Assembly staff and some SEEDA staff) provide technical, administrative and communications support and advice to the Partnership Board, the Strategy Board and the delivery boards and administrative support to the working groups.

The staff is made up of planning and economics specialists, supported by communications, finance and administration teams.

### What we do

The staff is responsible for providing advice on policy development, monitoring and implementing the Regional Strategy under the direction of the Partnership Board. The work on the Regional Strategy is funded by Communities and Local Government (CLG) Staff roles and responsibilities include:

- Managing the work programme to produce the Regional Strategy (policy development, implementation and monitoring)
- Providing technical advice on investment priorities
- Engaging with environmental, social and economic stakeholders and the public
- Working to support the implementation of the South East Plan and the Regional Economic Strategy, which will together form the Regional Strategy when the Local Democracy, Economic Development and Construction Bill is passed.

---

Produced by the Communications Team

**South East England Partnership Board**

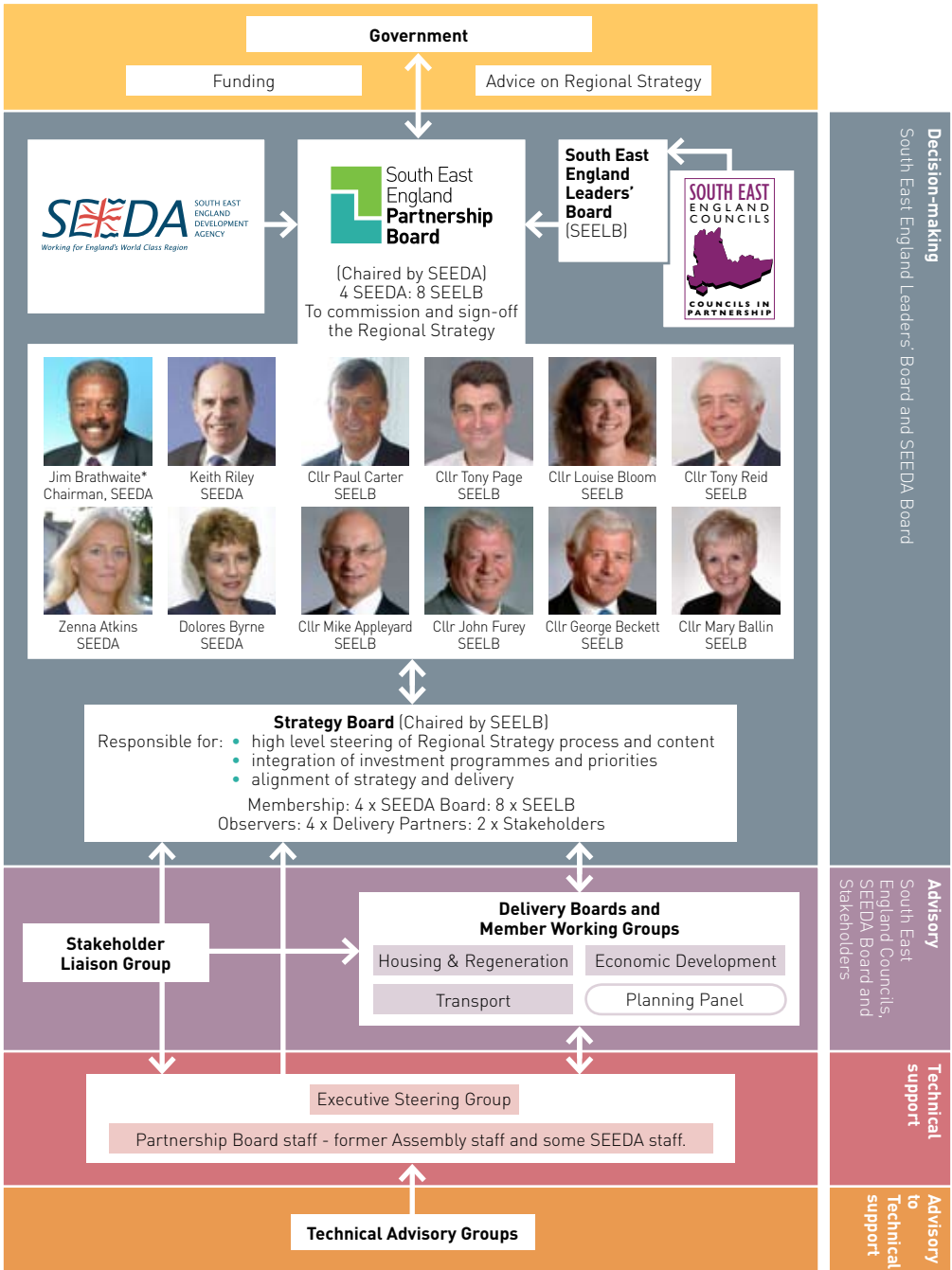
Berkeley House, Cross Lanes, Guildford GU1 1UN

**e:** [info@se-partnershipboard.org.uk](mailto:info@se-partnershipboard.org.uk)

**t:** 01483 555200

**w:** [se-partnershipboard.org.uk](http://se-partnershipboard.org.uk)

# GOVERNANCE ARRANGEMENTS IN THE SOUTH EAST



\* Rob Douglas will take over from Jim Brathwaite as SEEDA and Partnership Board chairman formally on 2 November.